

Meet

DINO 265RXT

DINO® Lightweight 4 x 4

Standard features in DINO 265RXT:

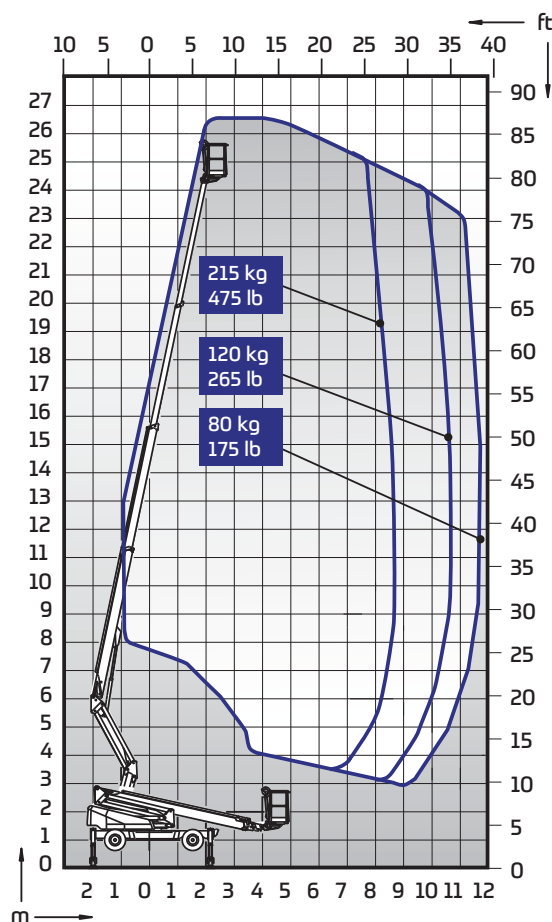
- Oscillating front axle
- 4WD, 2WS / 4WS / Crab steering
- Strong engine, excellent gradeability of 35%
- Great levelling capability up to 10°
- Low ground pressure, no damage on the ground
- Quick operation, all functions from the basket

Technical data	Metric	Imperial
Max. working height	26.50 m	86 ft 11 in
Max. platform height	24.50 m	80 ft 5 in
Max. outreach	11.70 m	38 ft 5 in
Support width	4.0 / 4.4 m	13 ft 1 in / 14 ft 5 in
Lifting capacity	215 kg	475 lb
Basket size	0.7 x 1.3 m	2 ft 4 in x 4 ft 3 in
Boom rotation	cont.	cont.
Basket rotation	90°	90°
Boom control	proport.	proport.
Transport length	7.17 m	23 ft 6 in
Transport width	2.11 m	6 ft 11 in
Transport height	2.41 m	7 ft 11 in
Weight	4500 kg	9920 lb
Approach / departure angles	34°	34°
Ground clearance	0.31 m	1 ft
Four wheel drive	std	std
Steering, 2WS / 4WS / Crab	std	std
AC socket in the basket x 2	std	std
Diesel engine Kubota 18.5 kW	std	std
Electric motor 110/230VAC	option	option
Automatic levelling	option	option
Gradeability	35 %	35 %
Drive speed	4.7 / 1.5 km / h	2.9 / 0.93 mph



Options available for DINO 265RXT:

- Electric motor for boom movements
- Automatic levelling
- Hydraulic generator 3.5 kW
- Different tyre configurations
- Air compressor
- Extra outrigger pads and brackets, 600 x 600 x 27 mm
- DINO SafeGuard secondary guarding
- LED working lights



DINOLIFT

UP TO THE JOB

DINOLIFT Oy | Raikkolantie 145 • FI-32210 LOIMAA, FINLAND

Tel: +358 (0)20 1772 400 • E-mail: info@dinolift.com

Read more: www.dinolift.com

Technical specifications are subject to change without prior notice.

©Dinolift Oy | 6.10.2017